

**STANDARD DEPARTURE CHART
INSTRUMENT (SID) - ICAO**

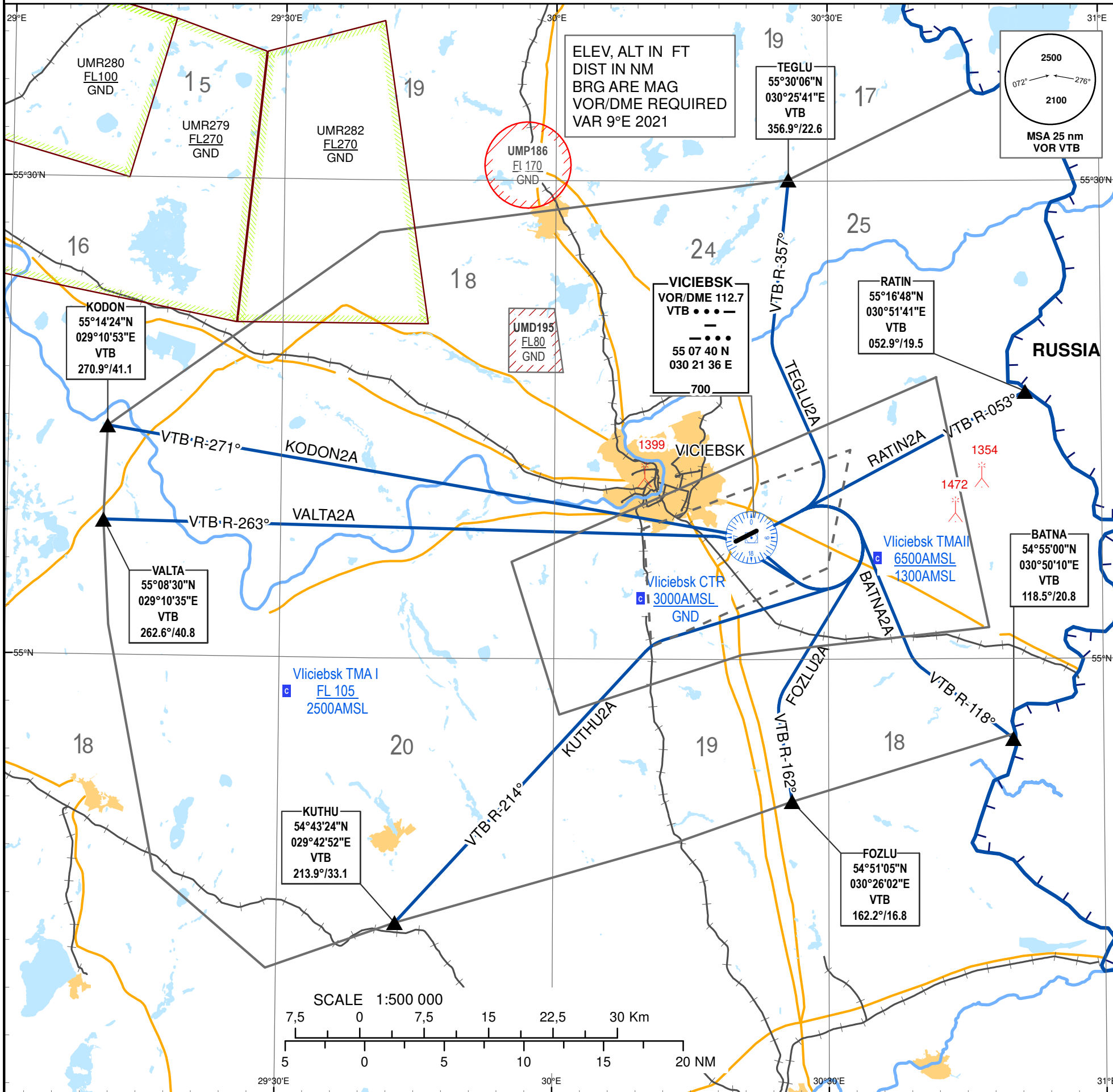
TRANSITION ALTITUDE
6000

Alt set: - hPa (mm on req)
-QNH (QFE on req)

TWR 120.400
MET 119.425 (EN)
126.525 (RUS)

**VICIEBSK
RWY 05**

**BATNA2A, FOZLU2A, KODON2A
KUTHU2A, RATIN2A, TEGLU2A
VALTA2A**



STANDARD INSTRUMENT DEPARTURE (SID) ROUTES VICIEBSK RWY 05	
SID NAME	ROUTE
BATNA 2A	BATNA TWO ALFA Climb straight ahead to 1300 (671) or above, turn RIGHT 148° track to intercept VTB VOR R-118° and proceed to BATNA.
FOZLU 2A	FOZLU TWO ALFA Climb straight ahead to 1300 (671) or above, turn RIGHT 192° track to intercept VTB VOR R-162° and proceed to FOZLU.
KODON 2A	KODON TWO ALFA Climb straight ahead to 1300 (671) or above, turn RIGHT 301° track, to intercept VTB VOR R-271° and proceed to KODON.
KUTHU 2A	KUTHU TWO ALFA Climb straight ahead to 1300 (671) or above, turn RIGHT 244° track to intercept VTB VOR R-214° and proceed to KUTHU.
RATIN 2A	RATIN TWO ALFA Climb straight ahead to 1300 (671) or above, intercept VTB VOR R-053° and proceed to RATIN.
TEGLU 2A	TEGLU TWO ALFA Climb straight ahead to 1300 (671) or above, turn LEFT 327° track to intercept VTB VOR R-357° and proceed to TEGLU.
VALTA 2A	VALTA TWO ALFA Climb straight ahead to 1300 (671) or above, turn RIGHT 293° track to intercept VTB VOR R-263° and proceed to VALTA.

CHANGE: Magnetic VAR.

THIS PAGE INTENTIONALLY LEFT BLANK